

FT Aura 5 Lite

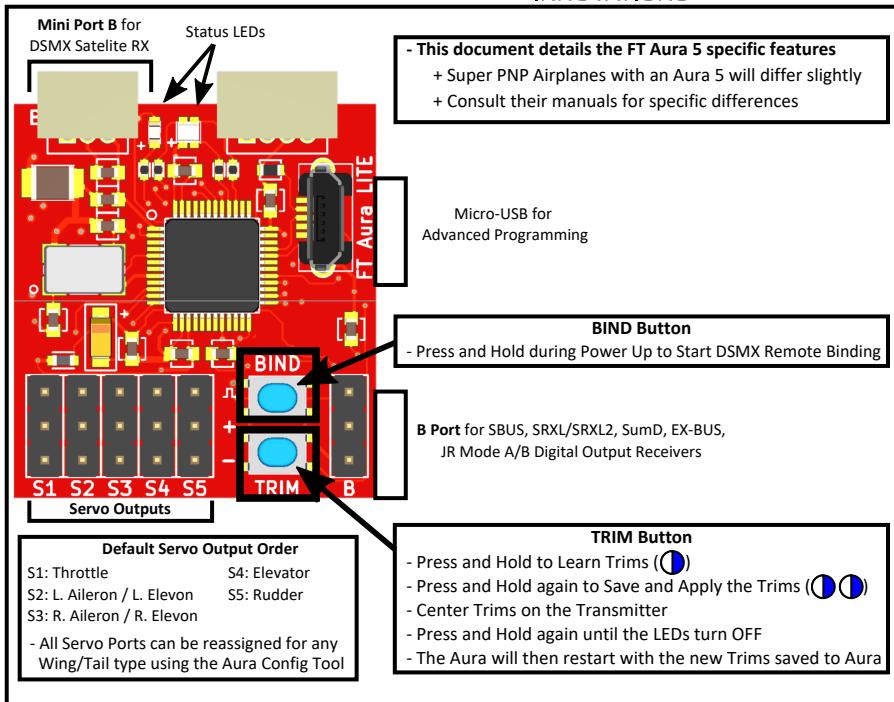
Powered by



Quick Start Overview: Revised for Firmware v1.25+

LED Status

07/27/2025



Quick Change Mode - Basic Setup without Programming

- Press and Hold both the **BIND** and **TRIM** Buttons to enter Quick Change Mode ()
- After entering Quick Change Mode, you can:
 - + Check Gyro Correction Directions**
 - Roll the Aircraft Wings RIGHT to confirm the Ailerons move in the direction to correct the Wings LEFT
 - Pitch the Aircraft Nose UP to confirm the Elevator moves in the direction to correct the Nose DOWN
 - Yaw the Aircraft Nose RIGHT to confirm the Rudder moves in the direction to correct the Nose LEFT
 - + Change Gyro Correction Directions if needed**
 - Hold the corresponding Transmitter Stick over for 6 seconds until the Servo reverses direction
 - + Toggle Flight Mode 2 between Gyro Off/3Axis and 6Axis Level Assist**
 - Press and Hold the **BIND** Button until you see a Blue LED ()
 - The Elevator will move 3 times to confirm *Flight Mode 2* has changed to Gyro Off/3Axis
 - The Elevator will move 6 times to confirm *Flight Mode 2* has changed to 6Axis Level Assist
 - + Toggle Wing Type between Ailerons and Elevons**
 - Press and Hold the **TRIM** Button until you see a Red LED ()
 - The Servos will cycle to confirm the change has been stored
 - + Toggle On/Off Proportional Master Gain on Ch8**
 - If you do not move Ch8 on your transmitter, Proportional Master Gain will be left as it is currently set
 - Move Ch8 on your transmitter HIGH to turn ON Proportional Master Gain in all Flight Modes ()
 - Move Ch8 on your transmitter LOW to turn OFF Proportional Master Gain in all Flight Modes ()
- Press and Hold both the **BIND** and **TRIM** Buttons again to exit Quick Change Mode and Restart the Aura

LED Legend	Off: —	Solid On: ●	Slow Flash: ()	Fast Flash: ()	Very Fast Flash: ()
------------	--------	-------------	-----------------	-----------------	----------------------

	Orange	Blue	Green	Red
- Calibrating Sensor	—	()	—	—
- Auto-Detect: Searching for a Receiver	()	()	()	()
- Powered On and Operating				
+ Not Receiving RX Signal	()	—	—	—
+ Receiving Valid RX Signal	()	—	()	—
+ Receiving Invalid RX Signal	()	()	()	—
+ In Failsafe Condition	()	()	—	—
+ Recovered from Failsafe	()	()	()	—
+ Launch Assist Mode Activated	()	()	()	()
- Powered On While Moving (Bad Gyro Calibration)	()	* Any of the above LED combinations		
- Quick Trim Mode (Hold TRIM button to start)	—	()	—	—
+ Learning Trims	—	()	—	—
+ Trims Saved	—	()	—	—
- Quick Change Mode (Hold BIND + TRIM to start)				
+ Gyro Correction Check and Reversing	—	—	()	—
+ Toggle Flight Mode 2 between 3Axis and 6Axis	—	()	—	—
+ Toggle Wing Type between Ailerons and Elevons	—	—	—	()
+ Master Gain Toggled On	()	—	()	—
+ Master Gain Toggled Off	()	—	()	—
- Quick Flip Mode	—	—	()	—
+ Toggle Flight Mode 2 between Gyro Off/3Axis and 6Axis	—	—	()	—

Quick Flip Mode - Toggle Flight Mode 2 Between Gyro Off/3Axis and 6Axis Level Assist

- With your Transmitter and Aura powered OFF, connect the Battery & wait for the Aura's BLUE LEDs to stop flashing
- Orient the airplane Nose Down vertically and Hold it Steady
 - + The Aura will detect this orientation and Flip *Flight Mode 2* between Gyro Off/3Axis and 6Axis Level Assist
 - + The Elevator will move 3 times to confirm *Flight Mode 2* has changed to Gyro Off/3Axis
 - + The Elevator will move 6 times to confirm *Flight Mode 2* has changed to 6Axis Level Assist
- Return the airplane to a normal orientation, Power Off the Aura, Power On the Transmitter
- Connect your battery as normal. Test *Flight Mode 2* and fly! If needed, repeat this mode to Flip *Flight Mode 2* again

Launch Assist

- Launch Assist will command a brisk climb while keeping the wings level
- To activate Launch Assist:
 - + HOLD full Left Aileron and full Up Elevator with Throttle Low & Rudder Centered for 3 seconds
- When Launch Assist is active:
 - + The Red LED will start to flash ()
 - + The Ailerons and Elevator will move to keep the wings level and command a climb
- If you are having trouble activating Launch Assist:
 - + Make sure your Transmitter Trims are centered
 - + Keep the aircraft immobile for 5 seconds with the Throttle Low and Ail/Ele/Rud controls centered
- Launch Assist is deactivated and normal control resumes when:
 - + Aileron or Elevator control stick is moved away from center after advancing the throttle